

Fully automated characterization and operation of Electric Machines



All about e-mobility



Our Mission

“Enable our customers to perform their tests in the shortest time with highest performance.”

Who should use our System

- **Developers of electric machines**, who want to carry out in-depth analyses of the machines on the test bench
- **Test engineers** who carry out component, function, or system validations
- **Application engineers**, who need to determine operating data, system performance and thermal tests of unknown electrical machines
- **Software developers**, who need to quickly test self-developed functions in the real environment

Key Benefits

Fast commissioning:

Typical machines are fully operational within two days including sufficient torque accuracy, peak power, and torque dynamic



Easy to use:



User-friendly operating concept offers a “one-click” solution for commissioning, characterization, and evaluation of electric machines, power, and torque dynamic

Highly adoptable:

Be ready for every machine type, angle sensor and test environment that might occur in the future. Our software offers



a wide range of configurations to be prepared for all test scenarios

High performance:



With switching frequencies up to 50 kHz, a maximum DC link voltage range from 48V to 1250V and currents up to 1000Arms the test system is ready for future challenges

Easy integration:

The system can be integrated in existing testbed systems. Your testbed automation and predefined test scenarios can be used as before. No limitation to individual testbed manufacturers



Hardware

Universal test bench inverter UPI for 3/6-phase electrical motors



UPI800 (800 V/500 Arms)

UPI1000 (1000 V/1000 Arms)

UPI1250 (1250 V/700 Arms)



19" rack with MicroLabBox®

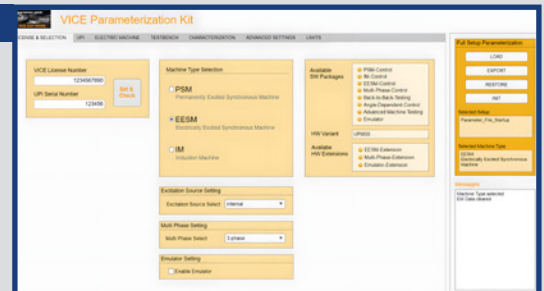
- Power electronics with SiC modules with suitable driver control
- Control and data acquisition via dSPACE MicroLabBox® with 50-pin DSub connectors
- AC and DC voltage acquisition ($\pm 0,6\%$, 0 – 800 kHz)
- DC and AC current acquisition ($\pm 1\%$, 0 – 72 kHz)
- Heat sink temperature sensing
- Connection possibilities for resolver and incremental encoders via interface cards
- Protection against overcurrent and overvoltage
- DC power supply via battery simulator or vehicle battery possible
- Internal FPGA logic for self-protection (max. frequency, hot branch, heat sink temperature)

	UPI800	UPI1000	UPI1250
Max. voltage DC:	800V	1000V	1250V
Continuous output AC:	490 kVA @ 560 Veff	1200 kVA @ 700 Veff	1060 kVA @ 880 Veff
Continuous current AC:	500 Arms (3-phase), 250 Arms (6-phase)	1000 Arms (3-phase), 500 Arms (6-phase)	700 Arms (3-phase), 350 Arms (6-phase)
Switching frequency:	1 kHz – max. 20 kHz	1 kHz – 25 kHz (max. 50 kHz)	1 kHz – 25 kHz (max. 50 kHz)
Switching frequency EESM:	1 kHz – max. 50 kHz	1 kHz – max. 50 kHz	1 kHz – max. 50 kHz
DC link capacity:	1,2 mF	1,68 mF	1,12 mF
Protection class:	1, PE connection with min. 70 mm ²	1, PEconnection with min. 70 mm ²	1, PEconnection with min. 70 mm ²
Protection:	IP30	IP30	IP30
Permitted ambient temperature:	5 – 40 °C, non condensing humidity	5 – 40 °C, non condensing humidity	5 – 40 °C, non condensing humidity
Auxiliary power supply:	230V (max. 500 VA) for inverter 230V (max. 100 VA) for MicroLabBox	230V (max. 500 VA) for inverter 230V (max. 100 VA) for MicroLabBox	230V (max. 500 VA) for inverter 230V (max. 100 VA) for MicroLabBox

Software – Workflow

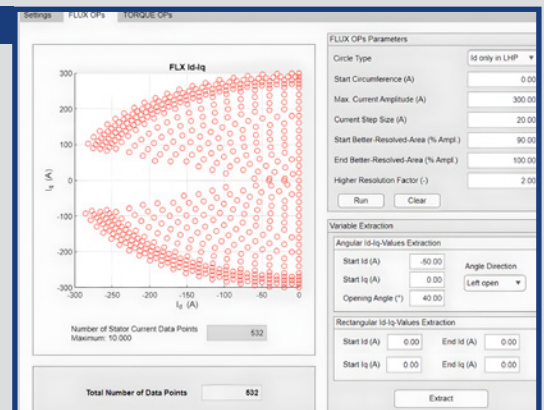
1. Parametrization

- Select machine type (IM, PSM, EESM, RSM ...)
- Setup angle sensor type
- Define limits
- Integrate external sensors (torque, temperature ...)



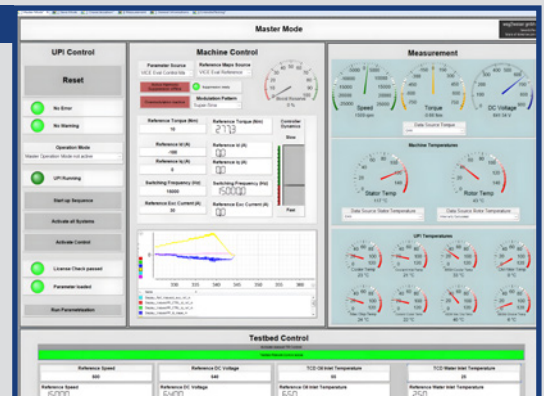
2. Test setup

- Quick definition of I_d and I_q operating points
- Define rotor and stator temperature limits
- Define different speeds, excitation currents, ...



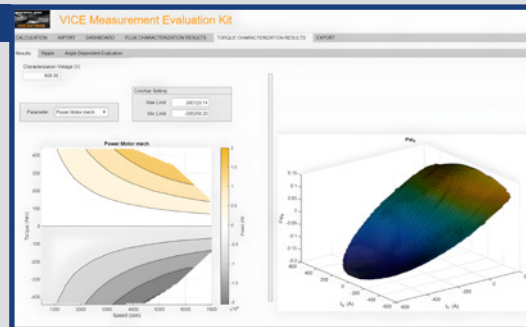
3. Operate machine

- Live visualization and control of all relevant data
- Automatic commissioning for easy setup
- Performing automatic tests or remote control of the system



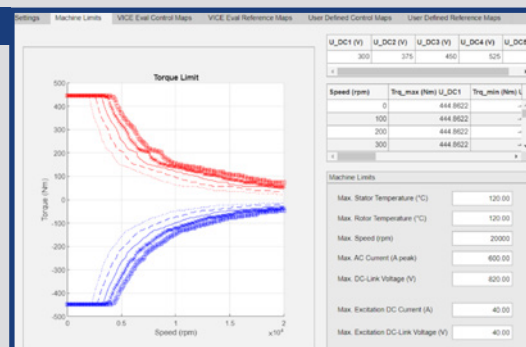
4. Data evaluation

- Derive relevant control parameters
- Calculate reference look-up tables for torque control
- Visualization of measured data and automatic report generation



5. Further tests

- Perform torque characterization for efficiency maps
- Automatic characterization of continuous and overload power
- Analyse results directly in VICE measurement KIT



Special Features

- Variable switching frequency (1 kHz – max. 20 kHz, can be changed online)
- Fully remote controllable
- “Back-to-Back testing”
- Multiphase operation: 3, 5 and 6 phases
- Repetitive control to eliminate or control harmonics
- Measurement and analysis of harmonics
- Supervision and reference value saturation of machine, inverter and testbed limits
- Integration of testbed derating in test scenarios
- Flight recorder to analyse system shutdowns in the aftermaths
- Suitable for all common angle sensor types
- Integration of temperature sensors without additional hardware
- Easy set up with angle sensor wiring swap, phase swap, automatic sensor alignment, automatic derivation of lumped parameters
- Variety of modulation methods, overmodulation and six step modulation integrated
- Analysis of transient short circuit currents with our TASC module
- Detailed data analysis with our VICE evaluation kit, access to all data in MATLAB and EXCEL format
- Easy visualization of measured and evaluated data
- Fully automated measurement of efficiency maps, torque accuracy maps, peak power maps, continuous power maps, ...
- Automatic report generation for quick data visualization



Let's get in touch with the future

Dr.-Ing. S. Haußmann Industrieelektronik
Beutwang 4 · 72622 Nürtingen
Tel.: +49 (0)7022/9565-0 · Fax: +49 (0)7022/9565-501
info@sh-el.de · www.sh-el.de

weg//weiser GmbH
Zimmerstraße 3 · 76137 Karlsruhe
Tel.: +49 (0)721/18248712
info@future-of-tomorrow.com · www.future-of-tomorrow.com